

Bleadon News

December 2019

www.bleadonparishcouncil.gov.uk

Issue 114



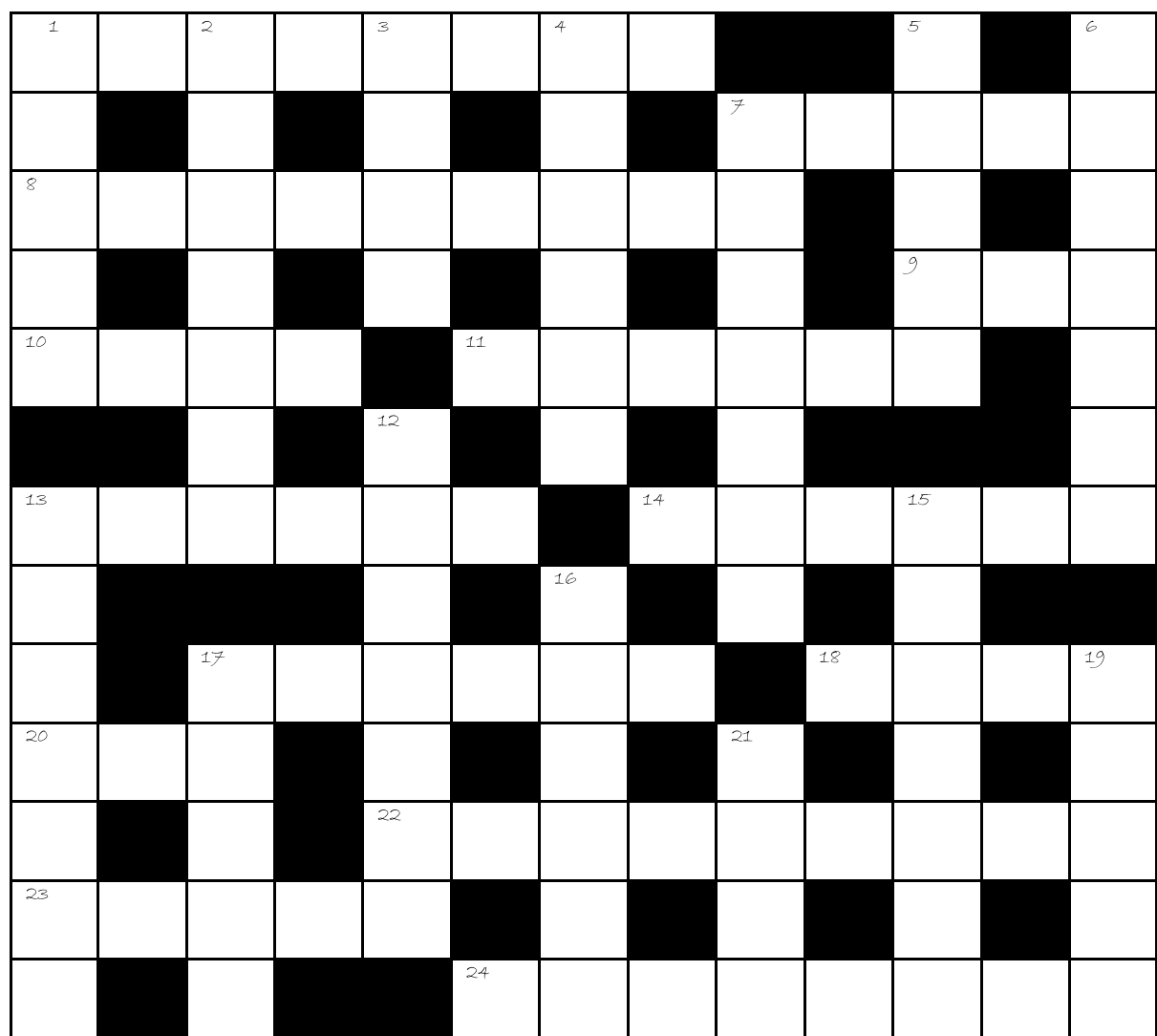
BLEADON

Many contributions
make up our local
news—get involved!

Wishing you a wonderful Bleadon Christmas



A Bleadon Cross Word.



Across 1 - Activity hoped for at 14, 19, 3 (8) 7 - Taster from the Mint, perhaps (5) 8 - Insect playing well, and he will tell you! (9) 9 - Painting Rat, perhaps (3) 10 - Double Deed from Mauritius (4) 11 - Ford model mistake, its frightening (6) 13 - See 13 down (6) 14, 19, 3 Actor Tim Ottley riding a brilliant horse, It's a resort (6) 17 - Draws attention but possibly staler (6) 18 - The responsibility is ours (4) 20- Idea, idiotic in part, is a help (3) 22 - Part of the roof fall to give information (9) 23 - Treasure Trove is open maybe k (5) 24 - Sounds like a mariner to attack one (8)	Down 1 - Saw, initially, in black and white (5) 2 - He is unlikely to be found in Bleadon Church (7) 3 - See 14 (4) 4 - Ear net can be tidier (6) 5 - Student activity rires to you and me. That's sweet (5) 6 - Name chaps on weight about one (7) 7 - Worth ten points to a challenging university (7) 12 - Youngster haring about (7) 13 - across—sounds like ringing in the village church, but its ladies singing 7, 6) 15 - Perhaps mind let a plant cling (7) 16 - So vest will perhaps keep us warm (6) 17 - Calculating snake (4) 19 - see 14 (5) 21 - Initially a settlement in a lot of land (4)
---	--



Message from the Chairman

Nobody is more surprised than I am to be writing this letter to you all as Chairman of the Parish Council.

I am however delighted to be able to do so.

One of my first and very important tasks was to represent the Council at the inquiry into building 200 houses on the fields next to the A370 and you will have read the basis of our objections in the last issue. What I wanted to tell you, and it's really important that you know this, is that your responses to the village survey were referred to on several occasions. North Somerset's barrister working on our behalf referred to it in his summing up and on several earlier occasions, but even more importantly, the inquiry inspector had clearly read it, referred to it himself and recommended that one of the main experts appearing on behalf of the appellants should read it too before completing his statement.

So although you might not have attended the inquiry, your views were heard as important evidence.

We don't know the result of the inquiry yet but you, as part of the Neighbourhood Planning responses were heard.

We hope to hold a Public Meeting in the new year re the Neighbourhood Plan and now you know how important it can be we look forward to seeing you there.

Congratulations too to our Bleadon in Bloom team and the success they achieved. We hope that the village will look even more beautiful in the Spring.

My best wishes for the fast approaching Festive Season and all the usual village events.

Gill Williams.

Neighbourhood Plan

The Neighbourhood Planning group has not met for the last 2 months. We are waiting for the result of the appeal against the 200 houses before we call a village meeting in January to decide what we have to do next. Graham Quick who has been helping us with policies will speak at that meeting and we hope that as many villagers as possible will be able to attend. Meetings are usually held monthly on a Wednesday evening in the Church Room – check the parish notice boards and Bleadon Neighbourhood Plan website <https://www.bleadonneighbourhoodplan.co.uk/>

Allotments

Most of the allotments are looking very well maintained especially the upper ones, but unfortunately a few of the lower ones are not so well managed. Perhaps, if the weather permits they can get an early spring clean.

There is a half plot available to rent. Can I remind all tenants that permission is required by the Parish Council to erect any structure Shed/greenhouse including sign before installation. Your cooperation is appreciated.

Councillor Mary Sheppard

Bleadon in Bloom Win

Our Bleadon Bloomers have had an incredibly successful first year. Winning Silver Gilt (just below gold) for their "Beautiful but Dutiful" entry this year. The focus was on the wildlife and this was rewarded by the John Wheatley Trophy for the Best Blue Campaign Entry. Considering our neighbours in Portishead also concentrated on the Wildlife and are a much more experienced team we are thrilled at this accolade and grateful to the team for making it happen. We look forward to finding out about their plans for next year in this edition of the Bleadon News.

We would like to remind everyone about our centenary celebration and ask that you contact Councillor Sharman to pledge your support. The idea is to bring the village together group by group and through each individual. By contacting everyone, we hope that no one is missed. We want to hold a big street party style celebration with all Bleadon groups involved. Everyone can do their bit. It will be great to see you all there on the 8th of May.

-oooOOOooo-

Multi Award Winning Bleadon or Up the Bleadon Bloomers

Rose Benjamin, David and Sue Sharman and I went to Newquay to attend the Britain in Bloom awards event. We noticed that many villages across the South West had entered this years competition and each one had a number of businesses and local groups entered for specific awards in the Business and Neighbourhood categories. It took the whole morning to give out hundreds of well deserved awards. We had only entered the Churchyard Gardeners project (a mistake we hope to rectify next year by entering many categories—be warned). The gardens won an advancing award which they were delighted to receive when we got home.

In the afternoon, the main awards started and we were quite nervous about how Bleadon had done. A lot of people had put effort in to making the village look wonderful on judging day and the Bloomers came out in force to meet them and share lunch. We were delighted to win Silver Gilt on our first attempt, many villages and towns try for several years to win this level of award so it was a huge pat on the back for the Bloomers. But it was not over for us even though we thought that was. We were to be honoured again with the John Wheatley Trophy for the Best Blue Campaign. It was unprecedented that in the first year we should be so fortunate and it was an honour to pick this up for all the people who worked so hard on that part of our entry,. This included the children from Lymsham and Westhaven Schools who helped with the map, Marshalls Quarry who worked so hard on the Rhyne, Thatchers who put bees and wildflowers in to their orchards and to Kitto Joinery and Steve for making our owl boxes. But probably most of all the Bill, Steve, Libby, Rose, Dave and Andy who really led this campaign on behalf of the village and made the Blue hearts.

Well, we go on to next year with a new entry and we hope we can bring even more people out to plant things and get involved. Next years theme is "Eternal Flame" to recognise the Olympics. We will be using Red, Yellow and Orange flowers, making Olympic Torch and Podium style planters and doing all we can to win gold. If you would like to get involved please get in touch with David Sharman on 07704288851 or look at the Bleadon in Bloom page on Facebook. We will be planting up a scheme for the May the 8th centenary celebrations, in November and having a big tidy up in December. Then we will need a team to help tidy and plant in February, March and May—then huge big tub plant up usually happens at the end of May. Come on and join in—be part of an award winning team.



Kirsten Hemingway-Arnold

Bleadon's Winning Ways

The Bleadon in Bloom team deserve every congratulation for winning at the first time of asking -the first time the village has won anything since 1987. The competition was for best-kept village in Avon and entry had to come from the parish council, the chair then being Mary Sheppard. Glenise and I had only taken over the old post office in front of the church a week or so earlier in July when a resident dashed in and insisted that we posed in our front garden for a photograph with Ruth Dyer, who turned out to be the councillor in charge of the village's efforts, to go with an article in the Bristol Evening Post. The judges were inspecting the village that day and it was very nice to learn later that our new home village had won an award.

Unfortunately Ruth and her husband John (older locals no doubt remember his building firm) moved to Wedmore soon after, and without her as the driving force Bleadon's efforts petered out. Roger Hart's father, Cyril, was the last councillor in charge and he became thoroughly disillusioned by the lack of support. Things drifted along for a few years until in 1999 Peter Smart became council chair and initiated the annual plant-up, receiving good support from a number of people. This was clearly a move in the right direction, and the Horticultural Society had increased its membership and resumed its monthly meetings. It then took nearly twenty years for the human catalysts to propose and follow through the idea of making it competitive. It has been very gratifying to watch so many fellow-residents mucking in to sustain the effort and I really hope it continues to be a regular event.

Les Masters



THATCHERS GATHER CROPS FROM TRIAL ORCHARDS TO MAKE CIDER OF THE FUTURE



Orchard Manager Chris Muntz-Torres collects apples from the Thatchers 100 Tree Trial

As harvest continues at Thatchers Cider, amongst the apples being collected are those from a special “100 Tree Trial”, that has seen 10,000 new trees of different apple varieties planted in Somerset.

So called because the trees are planted in rows of 100, Chris Muntz-Torres, orchard manager at Sandford-based Thatchers explains, “These are varieties that have either done well in our Exhibition Orchard, or have a reputation for producing excellent cider. This is the first time that the trees have been grown in the hedgerow style that Thatchers has developed, where the trees are trained along wires and shaped to allow more sunlight to reach the growing fruit. We’re looking forward to seeing how these varieties perform under new conditions and how the fruit presses into cider.”

Being the first year of planting, the crop of apples on these new trees is at early stages, but they’ll still be producing sufficient fruit for the cidemakers at Myrtle Farm to produce a small amount of cider from them this year. Normally an apple tree needs around seven years for it to start cropping fully.

The apples that are being trialled include: Bloody Turk (a dark red skinned bittersweet apple, originally from Hereford-

shire), Broxwood Foxwhelp (a medium bittersweet apple dating back to the 1920s, producing a full bodied juice), Muscadet de Dieppe (a small bittersweet fruit with an orange red skin), and Cider Lady’s Finger (a mild, sharp apple, originating in South West of England).

Thatchers Exhibition orchard in Sandford is already home to 458 varieties of apples, being preserved for future generations. The trees in the Exhibition Orchard originated in the former Long Ashton Research Station in Bristol, which was dedicated to cider making research. John Thatcher has made it his mission to preserve these varieties, including apples such as Bloody Ploughman and Fair Maid of Taunton. All 458 varieties have been blended into Thatchers Cider Barn 458 cider.



Bloody Turk apples



Cider Lady's Finger apples



Bleadon Country Sports Success

The Team at Bleadon Country Sports show were delighted to be able to donate a whopping £500 to the Dorset and Somerset Ambulance Charity following this years show at Appledore Farm.

The organisers had feared that the bad weather which caused them to rearrange the date and further rain on the day would have prevented visitors. But it was a great turn out at a thoroughly enjoyable event. Next year the show will be on the 22nd of August!

Second part of the Hearing about the Houses on the fields

A week before the hearing started new plans were circulated by the appellant, reducing the number of houses and putting in some more "green" and "wet" areas for the bats and wildlife. They also produced "notes to inform a Habitat Regulations Assessment". For this development a Habitat Regulations Assessment should have been provided by an independent party to inform the Authority (now the inspector) whether or not the wildlife mix on this land was protected and therefore whether it was possible to build. This wasn't done and so that appellant produced this "notes to inform" report which was inaccurate but was all the Inspector had.

Bleadon Acting together, represented by Kirsten Hemingway and Joanne Richardson who are also Councillors, had not finished their evidence from the last hearing and therefore Kirsten was afforded the option to speak, also Joanne was asked to comment as a Dark Skies expert, on the revised plans.

Joanne's report to the enquiry includes "At a time when mental health is very much in the forefront of media news, I also feel that this unnecessary extra lighting as a direct result of this proposed development could have a severe impact on the mental health and well-being of local resi-

dents. There is much research that has proved a direct link between excessive lighting to illnesses such as depression, anxiety, heart disease and even cancer. I have previously submitted this evidence for the Inspector's consideration.

As a Fellow of the Royal Astronomical Society, an ESERO-UK Space Ambassador and a representative of the Commission for Dark Skies, I still strongly oppose this development, despite the plan alterations, on the basis of lighting and destruction of the village character. It should NOT be allowed."

Kirsten spoke of the effect on the bat population and reminded the inspector that the issues for the Water Vole population had not been resolved. She pointed out the errors in the report and said that the village had not been heard because the arguments presented had largely been technical and not really addressed the impact on the community of Bleadon.

The inspector visited the village following the hearing and was shown around the site and the surrounding SSSI sites. He finished his inspection and we now wait to hear the result of his deliberations.

The Parish Council wishes to thank all those who gave their time freely to attend the hearing and to give their views about this threat to the fabric of our community.

Weston-super-Mare Croquet Club



We are drawing to a close on our Summer Croquet Season; it's been an excellent year with our teams doing well in the South West Federation Leagues. We have been well supported for our many Club Competitions which have proved to be competitive whilst being fun and most enjoyable. Our membership is almost up to full capacity, with quite

a number of members from Bleadon. The Club would like to take the opportunity of wishing everyone a joyful and peaceful Christmas and a very Happy New Year that's full of opportunities. Jeanette Stuchbery Chairman jeanettes-tuchbery@gmail.com

Jeanette Stuchbery Chairman. 01934 750421

Could you be a Marie Curie Helper or Companion?

Marie Curie are looking for dedicated volunteers for their Helper and Companion Services in Somerset. The Helper Service offers emotional and practical support to people in your area living with a terminal illness. This includes visiting them at home, going out with them, or talking to them over the phone.

The Companion Service is based at Musgrove Park Hospital in Taunton and offers one-to-one support for patients and their carers in their final days or hours of life. These volunteers give around three hours each week and provide companionship, comfort and emotional support for people on the hospital wards as well as family and friends who are visiting them. All services are completely free to the terminally ill person and full training and travelling expenses are given for all volunteers.

If you are interested please phone 08003047400 or email southwesthelper@mariecurie.org.uk



THEME for 2019

JOY TO THE WORLD



**You can interpret this in any way you like.
We look forward to seeing your exhibits.**

**Please bring your display to Church on
Saturday 7th December between 2 – 4pm
GOOD LUCK**



Impromptu Concert at the Church

On 25th October it was a joy to welcome the Tredegar Orpheus Male Voice Choir to Bleadon.

The Choir were staying in Weston for another event and made their offer to come "out of the blue" just a few weeks before.

They performed a mixture of music to a very appreciative audience and both the choir and the audience had a very enjoyable evening.

The event raised very nearly £600 for the Friends of Bleadon Church. This has given us a much needed boost at a time when the finances are very stretched.

What a gift in more way than one. Thank you so much to every one who came.

At the end of the evening many people, including from the choir, were saying we should do this again.

That has set us thinking, so watch this space.

If you know of other musical groups who would like to come and entertain us, please tell Tim via revtimerridge@gmail.com

Community Gardening in the Churchyard: We got an award!

The Bleadon Churchyard Gardeners have been awarded Level 3 in the "It's your Neighbourhood" section of the 2019 Britain in Bloom awards. Real recognition of all the hard work put in by the group over the last two years. Thank you so much to everyone who has been part of this work in any way.

The graves behind our volunteers in this photo were very overgrown with brambles until the group cleared them recently. Now we have more clear space we want to do some planting. For ease of maintenance we want none woody plants that will die down, can be planted into grass and are good for bees and insects.

The group meets on Saturdays between 10am and 12noon, once a month. Up and coming dates are: 14th December, 11th January and 8th February.

If you want to help us, please contact Tim at revtimerridge@gmail.com or on 01934 815 404 or simply turn up on the day.



GARDENCARE

From Shrubs/Lawns and Flowers

to Fences/Patios and Clearances

Everything cared for

Qualified and Experienced

O.A.P Discounts and affordable prices

Contact Mark 01934 204756

Or 07542 767118

Bleadon May Fayre 2020 will be on Monday 25 May

In a change to the usual early May Day Bank Holiday our May Fayre will be held a little later, on the Late Spring Bank Holiday on Monday 25th May.

This is in order to avoid clashing with planned VE Day celebrations over the early May Day weekend.

Apart from the change of date and a few new surprise (secret) attractions rest assured that our May Fayre will include all the favourite traditional attractions, activities, food, fun and frolicking that we have come to expect and enjoy.

The road through the centre of the village between Mulberry Lane and the church will be closed to vehicle traffic from 10am to 4pm on the 25th. This will allow the Fayre site to safely extend from the Coronation car park to the church.

We hope to see the return of:

- Climbing tower
- Big inflatable
- Chalice Morris Men
- Teddy Zip Wire from church tower
- Bric-a-brac in the youth centre (start saving your unwanted treasures for donation in March/April)

- Live music from the Dark Horses
- Plants for sale
- Woodturning demos
- Art gallery
- Classic cars
- Hot food, refreshments, local beer and cider
- Free games and stalls for youngsters

Admission £2 , children under 2yrs free. From 11am - 4pm.

More helpers needed

If you can help in any way we should love to hear from you. Call Keith on 01934 813127 or keith.pyke@btopenworld.com

Bleadon Parish Centenary Celebration

Next Year 2020, as a Parish, we will be Celebrating the anniversary of V. E. Day on Friday May 8th at the Village Hall and Play Area.

We plan to have an "Old Fashioned Street Party". And we need everyone to support us to create a great party atmosphere. We are inviting groups to fundraise with various stalls, games for our younger residents and we have been offered a Play/ radio presentation from "Bleadon Players" we also have offers of help from other groups, including the Bloomers who will be planting up a Red, White and Blue theme around the central village area near the hall and church. **BUT** we still need to have more Village **IN-PUT** can you help make this happen, are you involved in a group in the village that could help? We need entertainers, stalls and IDEAS, we want to encourage all groups and individual to contribute in any way they feel they can and help bring the village together to celebrate.

The whole event will run in the afternoon, probably from 1:00pm until 4:00pm in an Street Party style! Any offers of help or thoughts and ideas, please contact:

Dave Sharman 01934248901
Jo Richardson +447859066400
Kirsten Hemingway +447710098804

David Sharman
david.sharman@gmail.com



Bleadon Youth Club Treasurer's Annual Report

for the period 1 October 2018 to 30 September 2019

Continuing to thrive

With the support of its Trustees, Management Committee and YMCA staff the Bleadon Youth Club continues to flourish totally independently of any local council financial support.

The Youth Centre building that hosts our weekly youth club also provides a basic, but welcoming, social venue for all the young and senior members of our village community.

State of finances

On the 6 October 2019 our HSBC bank account held a healthy **£17,400** on deposit. A significant **£9247 of this is set aside for planned improvements and essential repairs** to our 56 year-old building.

Our income continues to just about meet our everyday operational needs as we save all of our fund-raising income towards necessary building improvements and repairs. **Our main objective over the next 12 months is to replace the damaged suspended ceiling and install thermal insulation in the main hall loft. Our carbon footprint currently leaves a lot to be desired.**

Managing the youth club

The Management Committee of volunteers is responsible for the running and maintenance of the building that is the Bleadon Youth Centre. It ensures that the building provides a welcoming and safe environment for all its users.

Keeping the youth centre building operational, safe and welcoming, together with funding the weekly youth club costs around £6500 per annum.

Our main annual outgoings are:

- Insurance £828
- Gas heating £934
- Lighting £747
- Water and sewage £431
- Rent and Rates £247
- YMCA youth leadership £1800.00
- Weekly cleaning £1235

We continue to receive the Government's 80% Mandatory Relief from the Non-Domestic Rate, but North Somerset Council has reduced its Discretionary Relief to 10%.

New roof

A major investment and improvement to the building this year has been the replacement of the flat bitumen roof over the front half of the youth centre. Local firm JR Construction undertook the work at a cost of £6200. We now have leak-proof sports and music rooms.

Providing for our young

The YMCA provide the professional and trusted youth leadership on our Thursday evening youth club sessions. May and Lailah, together with other YMCA support staff lead the youth club sessions, providing a sympathetic ear, encouragement and support for our youngsters.

Fundraising

Hard work by all the members of the management committee throughout the year ensured that we continue to raise significant funds towards safeguarding the future of the club and building.

In partnership with the Friends of the Church we raised £3400 for the youth club at this year's Bleadon May Day Fayre. This would not have been possible without the hard work of the many local volunteers who make this a Bleadon wonderful event. This includes a huge free contribution from the YMCA team.

Thanks go to the Queens Arms for hosting our Christmas raffle again, and to the generous customers and prize-givers who helped us raise over £750 this year.

Lettings

Use of the youth club building by individuals and organisations generates the essential income that funds of the youth club and the youth centre building. Our regular users and other occasional lettings helped generate over £4785 income over the past 12 months.

New Lease delay

We had hoped to secure a new Lease from the Parish Council by November 2018. Poor legal advice by the Council's solicitor and general misunderstandings within the Council mean that we still wait for a lease to be drafted. In the meantime the club carries on serving the young people of Bleadon and its neighbours.

Bleadon Youth Club was built and established in the 1960s as a charitable institution with a mission - *"to help and educate youth through their leisure time activities so to develop their physical, social, emotional and spiritual capacities that they may grow to full maturity as individuals and useful members of society and that their quality of life may be improved"*.

That aim remains true today, though we may put it a little simpler - **we are here to help our young people develop into caring, useful members of the community whilst having fun doing it.**



keith.pyke@btopenworld.com

BLEADON SHORT MAT BOWLS CLUB

Bleadon Short Mat Bowls Club is a friendly group of people that meet throughout the year in the village hall to play indoor bowls. The sessions are informal and sociable and anyone who wants to give it a go can come along for a taster. Short mat is suitable for everyone regardless of age and no experience is necessary. Bowls are available to borrow. The only thing you need to bring, besides yourself, is a pair of soft, flat soled shoes. We meet on Friday evenings throughout the year and on Tuesday and Sunday afternoons from September to May. If you are interested please just come along to one of the sessions or ring Joyce on 813893 or Kevin on 811267 for more information.

As well as playing bowls, we also organize a number of social activities and the club's social calendar this year has been as busy as ever. In January we held our annual **Christmas dinner** at the Beachlands Hotel. Then in March we had our annual five night **holiday to Torquay** where we play bowls against visiting local teams and also went for a lovely cream tea at the Living Coasts centre. We have also had a **fish & chip supper evening**, a **meal out at Bistro Pierre's** and held a Sunday afternoon **pairs competition** with home-made cakes. In August we had our **annual day trip**, this year visiting West Bay then a drive along the Jurassic Coast to Weymouth. This was rounded off with a visit to the Portland Heights Hotel for afternoon tea and cake. A lovely day out was had by everyone. Our **30th anniversary celebration** was held on 20th October when friends old and new gathered at the village café to celebrate 30 years since the club was founded and memorabilia of the club were displayed. We will round off the year in December with a fun night playing killer bowls followed by a lovely buffet.

For those who like a competitive element to their bowls, we also enter a team in the local Woodspring League. 2018/19 was another very successful year for the club with our team finishing third in the League and winning 14 of our 20 matches against teams from local villages including Hutton, Mark and Kewstoke. You can also have a look at our website www.bleadonsmbc.co.uk



News From the Bleadon Shop

We are working hard in the run up to Christmas to make sure we have everything stocked that you will need. Come in and see us if there is anything you would like to order. We have plenty of locally sourced presents to tempt you with and our shelves are stocked with all the usual array of essentials. The post office is also ready to help with the cards and gifts you need to send.

From Everyone at the shop



Merry Christmas and a Happy New Year

Bleadon Youth Club Leader's annual report 2019



Attendance:

In January going through to the summer, Bleadon's attendance was at a steady number of around 8-13 young people attending per weekly session. This year for the first time we opened during the summer holidays and we averaged about 2-5 members per week. We have reflected on this and we will put things in place to promote it more effectively next time. Since coming back after the school holidays our attendance has gone up to 15-18 young people per session, which is an outstanding number to have every week.

We've recently had a lot of new members that come and engage regularly, which is amazing! All the young people get along and make our new members feel very welcome.

Activities:

The young people love to socialise and chill out with their friends, the group engage better without a structured programme every week. However this year I have planned an activity once a month with ideas from the members. Some of the activities they have come up with and done over the year are, Nurf gun wars, human hungry hippos, clay sculpting, making lemonade, origami making, milkshake making,

book mark making and a badminton tournament.

Some of the activities planned up to the end of the year include making honeycomb, Halloween party, a community action project, Christmas crafts and having the OTSW team coming in to provide leadership tasks/games.

The young people can choose if they would like to participate in the activities provided. They really enjoy coming up with ideas as it gives them some ownership of their youth club.

How it's going:

Over the past few months the youth club has been really successful, with lots of new members and the young people are engaging more and more with the activities we provide. We've had a lot of interesting conversations and feel myself and Lailah have a really good professional relationship with all the young people as we have done some good relevant issue based work.

Our takings from subs and tuck sales have gone up lately, which helps to support the club. The young people all have a good attitude and respect one another as well as the youth club. Looking forward to the upcoming months.

May Barnett.
YMCA Youth Leader

The Queens Arms

It's been a busy few months at the Queens Arms and there's a lot to tell you about!

First of all, we were runners up in the Butcombe in Bloom competition. Butcombe hosted a lunch for the finalists and announced the winners. We won a photo and promotional video shoot which will be taking place soon and we can then use the material when we set up our new website (which is work in progress at the moment). So, thank you again to Wendy and Westover School for providing the lovely tubs and baskets.

We have also been accredited by CAMRA for our real ale. CAMRA recognises and promotes pubs that consistently serve quality real ale so we are really proud to have achieved this.

The first Quiz Night on 7 October was a huge success, thanks to Kev and Ruth who did a magnificent job in running it. Thank you to everyone who came along and joined in – we raised £146 for the Brownies. The November quiz is being run by Mike and Claire Gutsell and this time the money raised will be going to the Bleadon Youth Club. We will also be having a Christmas Quiz on Sunday 15 December – obviously with a Christmas theme, so the dress code is Christmas jumpers and/or Christmas hats.

The Open Mic sessions every other Sunday afternoon at 4.30 pm are also proving to be really popular. We have a good mix of regular musicians who come along and perform so if you want to end the weekend listening to some local artists playing brilliant music, please come along and support us, and if you want to join in, then please do!

Some more exciting news is that we have recruited a new Chef to our Team. Danielle has been with us for a few weeks now and has been busy working on a new menu which was launched on 15 October. This includes light bites such as Butcombe rarebit - a wedge of farmhouse bread with cheddar cheese, mustard, Butcombe beer and free-range eggs and fresh hand cut farmhouse bread and butter sandwiches. We will also have sharing platters and our take on the "classics". The blue plate offer for senior citizens has been extended to Tuesdays, Wednesdays and Thursdays and now includes the whole range on the menu. We have also got a 'Specials Board' which is updated regularly to include seasonal and a la carte dishes. Danielle cooked for the Queen when she visited Weston super Mare in 2008, so we are really pleased that she is now cooking for customers of the Queens Arms!

Our Sunday lunches have also changed and we have a lady called Sue who has also joined the team and works on Sunday producing brilliant roast lunches. We have a choice of three meats and a vegetarian option, fresh locally sourced vegetables, all the trimmings and lovely home made Yorkshire puddings and 'proper' gravy. The vegetables and gravy are now served separately and there is also a dessert board which includes a choice of classic home made puddings.

Our new pizza oven is also being put to good use, and don't forget, you can ring and order a pizza and take it away to enjoy at home.

We are also hoping to produce a Christmas menu which will be available in December.

Coming up we have got the Queens Arms' Pantomime on 22 December in the car park. Work has already started on it, and it will be our first one so we can't wait!

We will be open on Christmas Day from 11.00 am for a few hours and our other festive opening times will be displayed outside the pub and on Facebook nearer the time.

We hope you are enjoying all the different things that are being organised in the pub – thank you so much to everyone for supporting us and helping with all the different activities. We couldn't survive without your support, so it means a lot to us.

See you soon – Alan and Kerrie



Bleadon Village Monthly Market is looking forward to the bumper Christmas Market on Saturday 7th December from 9.30–12.30. It will be held in the three halls in the heart of the village with over 50 stalls. Parking is limited at the halls so please walk if you can, or park sensibly in the village.

Come along and browse the stalls for Christmas gifts and food supplies. There will be the usual Christmas Raffle with many prizes donated by local businesses, stallholders and friends of the village halls.

Meet our friendly stallholders. A regular every month is Mike Smith, of Mike's Pork. Chat to Mike about his prizewinning herd of Gloucester Old Spot pigs. Mike wins many rosettes and cups for his pigs and pork products. Happy pigs make delicious sausages! Mike also provides other pork products including pies, sausage rolls, faggots as well as other cuts. The Market kitchen uses Mike's sausages.

Bleadon Village

MONTHLY

MARKET

Saturday



Coronation Hall and Jubilee Hall

BS24 0PG

9.30am – 12 noon

30+ stalls with:

Fresh local produce. Old Spot Pork & Sausages.
Goat Meat, Milk, Cheese, Lamb. Bakery. Eggs.
Pies. Savouries. Preserves. Cakes. In season Veg. Plants.
Books. Crafts. Jewellery. Collectables. Gifts. Toys.
Bric-a-Brac.
Something new every month.
Delicious refreshments.

Find us on Facebook and www.bleadon.org.uk/market

BLEADON CHRISTMAS MARKET

Saturday 7th December 9.30 - 12.30

Bleadon Coronation Halls BS24 0PG

**Over 50 festive stalls - RAFFLE - refreshments
Secret World visitors - something for everyone**

**Limited parking at halls, park safely in village
and walk, its not far!**





Whitehouse

Kennels & Cattery, Somerset

Whitehouse Kennels & Cattery are a family run pet boarding home. Having been in the animal care business for over 25 years we know the importance of your family friend and will provide a truly caring service.

Whether you are looking for pet boarding, relocating abroad, dog grooming, or buying a bed for your cat, Whitehouse Kennels & Cattery is the place for you!

Services include:

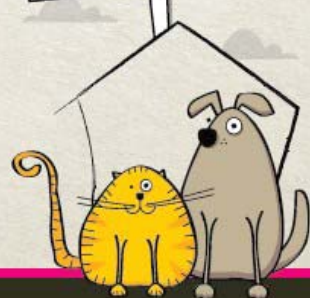
- | | |
|---------------------|-------------------------------|
| Pet Boarding | Cuddle Buddies |
| Day Boarding | Collection & Delivery Service |
| Pet Export & Travel | Grooming Service |
| Pet Shop | Wedding Doggie Services |



Find us on Facebook



The Pet Boarding and Travel Experts



OPEN EVERY DAY
10am - 1pm & 2pm - 6pm

For more information & prices contact us on:

T: 01934 750352 E: enquiries@p-e-t-s.co.uk or visit www.whitehouse-kennels.co.uk
Whitehouse Kennels & Cattery, North Rd, Eastertown, Lymphsham, Somerset BS24 0HS

NEWS AT WHITEHOUSE KENNELS AND CATTERY

As 2019 comes to an end we would like to take this opportunity to thank the local residents for all your support over the last year and to wish you all a very Merry Christmas and a prosperous and healthy 2020.

A few years ago now the new Micro chipping law came into effect, we had hoped that this would bring about a drastic reduction in the amount of stray dogs being picked up from the streets and that for those strays that are collected a much quicker reunion back to their owners using the information on the microchips. Sadly our hopes have not fully materialised and although the amount of stray dogs has dropped the amount of unclaimed strays has continued to remain at similar levels to before with many microchips not carrying the correct information and many unwanted dogs ending up being abandoned. We have noticed with these abandoned dogs more and more having significant health issues which has been very upsetting for our staff to deal with. We have been using social media namely Facebook to reunite dogs and find homes for those abandoned dogs which has really helped us and more importantly our dogs. Please check your details are up to date if you have a pet as it is often overlooked by many of us which we could regret if they ever became lost.

This year our cuddle buddy team, a gorgeous gang of dogs that visit residential homes and team up with poorly adults and children have been very busy. Some of you may have had a cuddle with little Nelly at Lymphsham café our newest addition (a breeder reject!!). She continues to visit a home for the blind and is booked to have Christmas dinner with the residents! They are in fact so busy now they have their own events diary for 2020. Little Nelly's favourite is her "breakfast with a pug" event in a local café in Burnham with donations to local charities. We are currently in training with their sleigh to take into the homes laden with presents.

We are still working to decrease the number of facilities we have but increase the standards and have now converted 20 ordinary cat pens into 12 luxury cat lounges and the feedback from our customers has been great. We have also created 2 very special penthouses one themed like a classroom and a few customers have commented when they have returned from a short break their cat was staying in accommodation better

than where they were staying!! We hope next year to start on the kennels and are very excited about what we have planned for our boarding dogs.

Lastly let me tell you about two beagles found roaming the streets in July and August. They were flea ridden and petrified of human contact and withdrawn and frightened. We believe they had been living in outside sheds as they had infected skin where they had been laying on hard floor in their own mess and were being used for breeding. Even walking was a struggle as they just wanted to curl up and hide it was distressing to see. Unsurprisingly they were never claimed and although we tried so hard with them they needed very specialist help. We work with an amazing animal charity <https://www.facebook.com/animallifelineuk/> and they managed to find them a very special rescue over in Kent. We then had a team of volunteer drivers who drove them across to Kent for us where they could undergo intensive rehabilitation. About a month after they arrived we were sent a video from the charity showing them playing and running round it was magic and they had been given beautiful names Narla and Samba. In cases like these the Local Authority who had taken ownership of them don't have the resources to pay for this specialist care and we are indebted to charities like animal life line who help makes things like this possible.

Merry Christmas from the kennel Gang!!

Christine King



KNEE ARTHRITIS

Osteoarthritis is the most common type of arthritis that affects the knee. It is normally associated with "wear & tear" of the cartilage of the knee. The cartilage is the cushioning on the ends of our bones which helps to protect the knee when bending & straightening it. If the cartilage wears away, the gap between the bones can narrow causing pain, swelling & stiffness. These symptoms can make everyday activities such as walking & climbing the stairs more difficult. Other symptoms that may be experienced are heat, clicking or locking of the knee joint & pain that is worse on waking or after sitting for long periods.

Knee arthritis does progress over time which is why it is more prevalent in older adults & the pain can increase as we age. In early stages of arthritis keeping active & doing specific exercises can help with pain management.

Why do I have knee arthritis?

There is no specific or single cause of knee osteoarthritis. However there are some risk factors such as weight (due to increased pressure on joints) & also a repetitive strain type effect for those who worked in jobs requiring repeated bending at the knees, although these do not necessarily mean that you will suffer from knee osteoarthritis. In addition, previous injuries to the knee such as ligament or meniscal (cartilage) tears have been shown to be associated with the risk of developing arthritis later in life as the ability of the cartilage to repair itself slows down.

Why is my arthritis causing so much pain?

This can be down to the fact that the degeneration or ability of the cartilage to heal slows down as we age. Pain can sometimes occur in more severe arthritis due to the narrowed space between the bones in the knee causing them to "rub" but more commonly pain can occur because of how our muscles respond to what is going on inside the joint. Muscles or groups of muscle can stop working efficiently due to the pain & this causes others to overwork & fatigue. Although we cannot necessarily influence what is going on inside the knee joint, we can help to have an effect on the strength or function of muscles to take some of the pressure off.

How can I manage my knee arthritis?

Flare ups are a normal part of having arthritis. Although you may feel that rest is the best option, arthritis doesn't like it! Movement helps to encourage lubrication of our joints through the synovial fluid contained within them. Exercises to help balance the muscles around the knee & also those to

strengthen the core & hip muscles meaning that they can take on some of the stress of the work that the knee has to do. Cardio exercise such as swimming & cycling can help you to maintain general fitness.

About Mel

I have a First Class Honours degree in Sports Therapy from the University of Bath & have nine years of experience working within a clinic and with sports teams. Through personal experience of injury & the difficulties of returning to sport following this, I have a good understanding & empathise with anyone finding themselves in the same situation. My aim is to provide an optimum level of treatment & advice for those who are seeking a return to fitness.

In addition to my Sports Therapy work I am also a Pilates Instructor & I currently teach the Pilates class on a Friday morning at Bleadon Coronation Halls.

If you have any questions or there is anything that you would like to see in future editions, please feel free to contact me on 07787 563775 or by e-mail at emma@ehsportstherapy.com.

Emma Hunter



Your Parish Council

NAME	ADDRESS	PHONE NUMBER
Gill Williams (Chairman)	5 Pine Lea	813255
Mary Sheppard (vice Chairman)	The Incas, Bleadon Road	812921
Steve Hartree	Chestnuts, Chestnut Lane	811849
Kirsten Hemingway	Southerly, Purn Way	815540
Jo Richardson	Sellicks, Celtic Way	07859 066400
Andy Scarisbrick	Westdown Cottage, Purn Way	813125
David Sharman	3 South Combe	248901

Bleadon Wild—Owl Special

This year the rules for the Britain in Bloom competition changed to include measures for nature, wildlife and the environment. As part of our successful entry, Steve Smith from Kitto Joinery made us some splendid owl boxes. We were fortunate to get support from Chris Sperring MBE, a local owl expert, who helped us to identify suitable sites to install the boxes and to supervise the installations. This first set of boxes are on the edge of the centre of the village in the direction of Bleadon Hill. It is hoped that other areas around the village will be targeted in subsequent years. One of the limiting factors on numbers of owls is lack of suitable nest sites and man made nest boxes are an important resource. In this first year we have installed four boxes with one still waiting installation. Two of the boxes are for tawny owls. The tawny owl is a woodland bird and is the most common of the British owls. Its familiar twit twoo call is the one most evocative of owl sounds. When you hear that call, it is usually a pair of owls, the female making the twit call and the male answering with twoo.

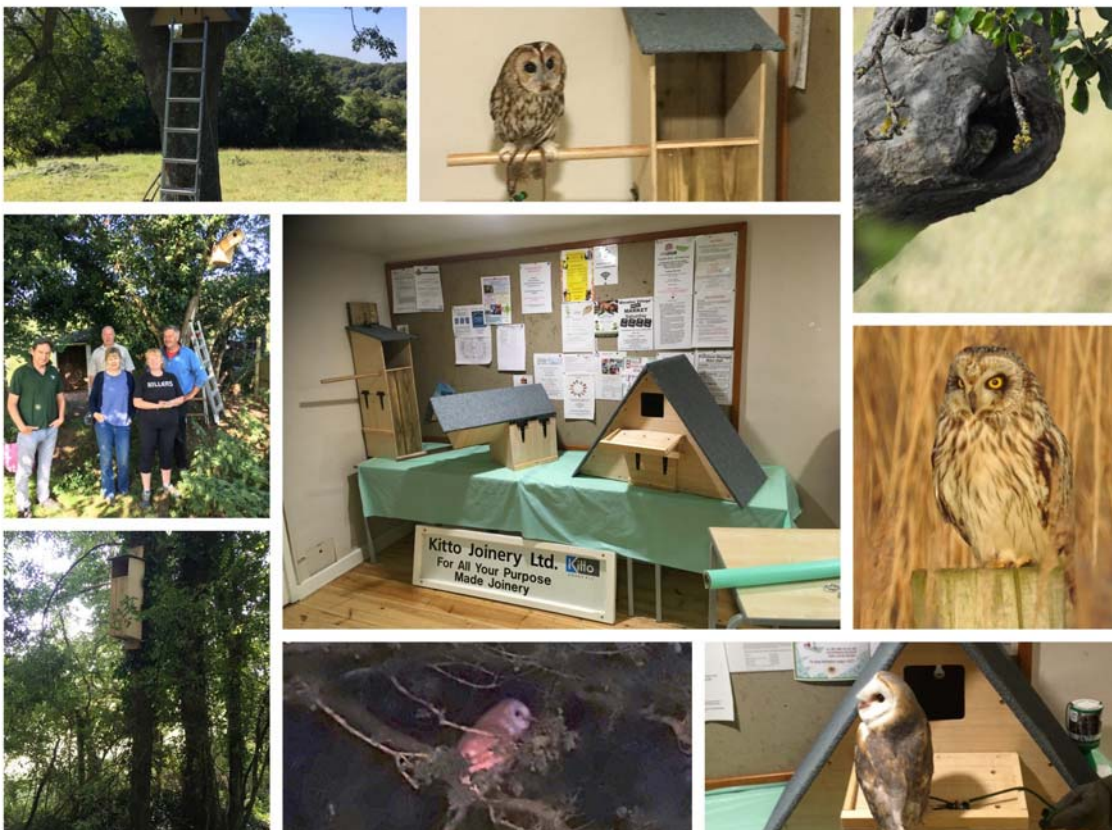
Having always had a conservation status of least concern, they have now been moved to the amber list, indicating that their population is declining. Loss of habitat and rodent poison are two issues, but it is also thought that the decline in insect numbers may be a factor. Beetles and invertebrates make up a significant part of the tawny owl diet. One box is for barn owls. The barn owl is an iconic sight in the British countryside, hunting on the wing over open farmland, using their acute hearing to listen for their favoured rodent prey in the long grass and hedgerow edges. Although they are nocturnal, they can be

seen hunting in daylight, particularly in early summer when they have young mouths to feed. They are currently on the green, least concern list, but although their breeding numbers are stable, they are much lower than historical levels and are in need of as much support as we can give them. The remaining boxes (one yet to find a home) are for little owls. These owls were introduced in the 1800s, but have made themselves at home in the British countryside. As the name suggests, they are the smallest of our owls, around half the size of a tawny owl. They are quite adaptable to different habitats, but are fond of orchards, farm land, waste ground and even large gardens and parks.

Their numbers are thought to be declining, although a new survey is due to be undertaken in the near future to update their status. Little owls are most active at dawn and dusk, but can be frequently seen in daylight hours. I have heard that before the expansion of the Marshalls yard they used to be seen regularly in the quarry. These three owl species are the most likely to use nesting boxes, but there other owls you might spot if you are fortunate. Short eared owls nest further north, but over winter along our coasts, often being seen along the salt marsh at the Bleadon Levels and Uphill. They are quite active during daylight hours and you could well spot them hunting on the wing or sitting on a post or some driftwood. They roost on the ground, using thick tussocks as shelter and camouflage. This does leave them prone to disturbance from dogs off the lead. Look out for them from late October until May. It ought to be possible to see them from Purn Hill with a decent pair of binoculars, but I have never been

lucky. Long eared owls are the most unlikely to spot, but have been seen at Uphill occasionally. They are similar in appearance to short eared owls, but have orange, rather than yellow eyes, longer 'ear' tufts and distinctive facial markings.

Bill Hewitt



BLEADON WI CHRISTMAS
CAROL CONCERT
AND CHRISTMAS EVENT
FROM 6PM AT THE
CHURCH
AND
CORONATION HALLS

FRIDAY 13TH DECEMBER



Christmas Celebrations at Bleadon Church.

A light shines in the darkness, and the darkness has not overcome it!

You are invited to our:

- * Carol Service at 3pm on Sunday 22nd December
- * Crib Service at 4.30pm on Christmas Eve
- * Midnight Mass at 11.30pm on Christmas Eve
- * Christmas Morning Service at 10.15am on Christmas Day

Also, from 7th December there will be a series of displays in Church titled "Joy to the World".

Please call in and have a look any time in daylight hours when the church will be open.

We hope you all have a good, encouraging and uplifting Christmas.

For more information please look at www.bleadonchurch.co.uk or contact Tim (Our Rector) via revtimeridge@gmail.com or 01934 815 404.

An advertisement for Bridge Garage. The background is a photograph of a garage with a blue car and a red car. The text is overlaid on the image.

BRIDGE GARAGE
Bridge Road, Bleadon, BS24 0AU 01934 812206
enquiries@bridgegarage.com

Servicing & MOT
Car sales
Repairs
Computer diagnostics
Air conditioning
Attended Filling
station

Because we care

Bleadon Wild

Winter is a busy time for birds in the garden. The colder weather can bring greater numbers and variety of birds, especially during spells of ice and snow.

When the temperature is below zero it can be especially important to provide water for drinking and bathing. Bird baths may freeze over, so vigilance is required to make sure there is water available. There is a general drift of birds south in the winter, with a lot of birds resident here in the summer moving on to warmer climes, to be replaced or supplemented by birds from further north. The robins in your garden over winter may well be different to those you saw in the summer. Birds moving in from northern Europe, include large numbers of starlings and winter thrushes such as fieldfares and redwings.

If you have left berries on your shrubs, or windfall apples, they will provide a feast for all sorts of birds. In the snow and ice of 2017 I had many fieldfares and redwings in the garden with a maximum of 50 fieldfares at one time as flocks of birds following the thaw north dropped in for a pit stop.

I regularly see blackcaps and reed buntings on the feeders over the winter months, with more visits from great spotted woodpeckers and long tailed tits, but when conditions are harsh also look out for less frequent garden visitors such as bullfinches or goldcrests or rarities like siskins and redpolls.

Hopefully, feeding the birds in your garden is of benefit to both the viewer and the birds. A word of warning though is that feeders can spread diseases. It is important to clean your feeders frequently to avoid this. If you see signs of dying or diseased birds in your garden it is recommended that you stop feeding for a few weeks and make sure that your feeders and feeding area have been cleaned and disinfected before resuming.



Wildlife Benefits People

I have been through some tough times caring for my parents towards the end of their life and at times I have struggled with my mental health.

I have found volunteering around the village with pathways maintenance and Bleadon in bloom as well as working with wildlife at Secret World Wildlife Rescue to be of enormous benefit. Volunteering has a social aspect and gives you a feeling that you are making a useful contribution. The crucial thing to me has been access to green spaces and nature around the village. We are so lucky to have such plentiful and varied spaces to walk so close at hand. For me, I find photography is a way of immersing my self in the surroundings and clearing my mind of troubles. Finding good locations and interesting wildlife is a challenge in itself, but then you need to develop field craft to get as close as is comfortable for both parties and try to take the best photographs you can. For me, the best feeling is when the subject knows I am there, but is happy that I am not a threat and is relaxed enough to carry on with its life and allow me to take candid shots. I try as hard as I can not to stress or scare my subject.

The other benefit is sharing my photographs and getting feedback. I started the "in and around Bleadon" Facebook group about 18 months ago and I think it has been a useful forum for sharing photographs. I am pleased that others get pleasure from my images, but also enjoy looking through photographs posted by others. Its nice to see the world through different eyes.

Bill Hewitt

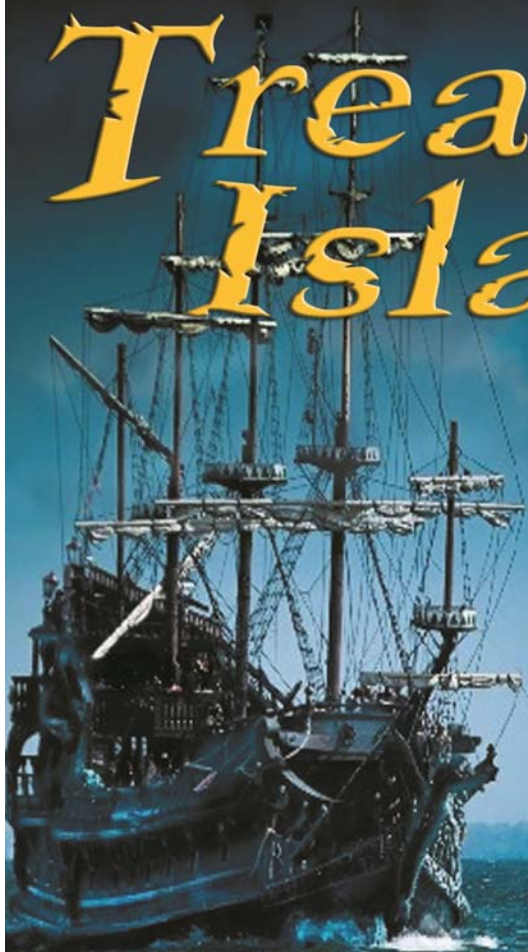


WHAT'S ON IN BLEADON?

Mon 7-8pm & 8-9pm Jubilee Room			
Marie Keele	Aerobics	01934 270853 / 07939 038071	mariekeele@hotmail.co.uk
Tues 10.30-12.30 Coronation Hall			
Tina Dodd	Art Class	01934 843660	sandtdodd@btinternet.com
Thurs 10-12noon Jubilee Room			
Stevie Rhodes	Bleadon Art Group	01934 813497	
Mon 2-5pm Coronation Hall			
Doug Norfolk	Bridge Club	01934 812128 / 07547 163862	dougn@btinternet.com
Judith Hutton	Bridge Club		judithhutton341@googlemail.com
Tues 5.30-7pm Jubilee Room (Term time only)			
Jacqui Hall-Scott	Brownies	07730 498371	j.hallscott@btinternet.com
1st Monday - 7-9pm Coronation Hall			
Karen Bartley	Self Healing Workshops		kbartleytherapies@hotmail.co.uk
3rd Mondays 7-10pm Coronation Hall			
Debbie Thorne	Holistic Therapy	07905 537118	debbiethorne37@hotmail.com
Fridays 2-4pm Coronation Hall			
Gordon Brown	Friendship	01934 811926	NO EMAILS
3rd Thursdays 7.30pm Coronation Hall			
Les Masters (Chair)	Halls Management Committee	01934 811976	lesleymasters246@btinternet.com
Ian Gibson (Treasurer)	Halls Management Committee	01934 814261	igibson6@sky.com
Kevin Barrett (Secretary)	Halls Management Committee	01934 811267 / 07855 225049	kevinbarrett240@btinternet.com
Scott Morris (Players)	Halls Management Committee	07963 747572	scott@dotphotographic.co.uk
Betty Patterson (Village)	Halls Management Committee	01934 812183	gilbet.paterson@btinternet.com
Gill Williams	Halls Management Committee	01934 813255	gwilliams28@btinternet.com
Jane Derrick (WI)	Halls Management Committee	01934 811464	jane.tony@talktalk.net
Pam Lamb	Halls Management Committee	01934 812706	pamlamb@btinternet.com
Steve Hartree	Halls Management Committee	01934 811849	stevenhartree194@btinternet.com
Andy Scarisbrick	Halls Management Committee	01934 813125 / 07747 626875	scarisbrick.andy@gmail.com
3rd Tues (Oct-June) 7.30pm Coronation Hall			
Libby Boucher	Horticultural	07966 563495	libbyboucher2003@gmail.com
Rose Benjamin	Horticultural		
3rd Sat (both halls) 9-12.30pm			
Jo Jones	Market	01934 812370	jojonesbleadon@tiscali.co.uk
2nd Monday 7.30 Coronation Hall			
Gill Silliams	Parish Council	01934 813266 / 07964 084501	gwilliams28@btinternet.com
Naomi Bibi	Parish Council	07453 368318	parishclerk@bleadonparishcouncil.co.uk
1st, 2nd, 4th & 5th Tues Sept-May. 7.30pm. Coronation Hall			
Trevor Hartgroves	Photographic	01934 239011	t.hartgroves@sky.com
Mark Frisby	Photographic	01934 812573 / 07796 693032	marknfrisby@yahoo.com
Wed 7-8pm Jubilee room			
Corinne Mutlow	Pilates	07919 532960	coz@cmutlow.com
Fridays 9.30-10.30am Jubilee Room			
Emma Hunter	Pilates	07787 563775	emma@ehsportstherapy.com
Wed 7.30pm & shows 4th weekend in Jan, May & September			
Peter Gibbon	Bleadon Players	0785 9001468	peter@mpgifa.co.uk
Tues & Sun 2.30-4.30pm (Sept-May) Fri 7-9pm (all year round) Jubilee room			
Kevin Barrett	Short Mat Bowls	01934 811267 / 07855 225049	kevinbarrett240@btinternet.com
Graham Rogers	Short Mat Bowls	01934 811571	
Paul Shand	Short Mat Bowls	01934 814445 / 07970 868163	
4th Thurs 7.30-9.30pm Jubilee Room			
Sue Dennyly	Bleadon Sugarcraft Club	07891 996707	bleadonsugarcraftclub@gmail.com
Wednesdays Coronation Hall 9.30-11.30am Term Time only			
Rachel Booth	Toddlers	07856 125163	boothr12@yahoo.co.uk
Toddlers is moving to Thursdays from Jan 2020			
Catherine Saunders	Toddlers - Treasurer		catherine_saunders@hotmail.co.uk
2nd Thurs Coronation Hall 7.30pm			
Kirsty Wilson-Evans	Womens Institute	07796 441766	bleadonwi@hotmail.co.uk
Michelle Harper - President	Womens Institute	07780 688830	
Karen Grainger - Treasurer	Womens Institute	07795 546058	
Tues 8-10pm Jubilee Rooms			
Viv Kimber	Womens Institute Choir	01934 811464	v.kimber@bopenworld.com
Jane Derrick	Womens Institute Choir		jane.tony@talktalk.net
Oct-April Thurs Coronation Hall 2-4pm			
Sue Norfolk	WSM Croquet/Whist	01934 812128 / 07484 233086	suenorfolk99@gmail.com
Mon 9.30-10.30am Jubilee Room			
Cheri	Yoga	07717 290708	info@uniquebalance.co.uk
Thurs 6.15-7.15pm Jubilee Room			
Sayeeda	Yoga	07725 901810	info@sadayoga.co.uk
Other Contacts			
Kate James	Bookings Officer	01934 814955 / 07775 795977	bleadoncoronationhalls@gmail.com
Tony Derrick	Security	01934 811464	keith.pyke@bopenworld.com
Keith Pyke	Youth Club Hall	01934 813127	
Chris Butler	Bleadon Bob		
Bill Blacklock	Caretaker	01934 813031 / 07747 801753	

A BLEADON PLAYERS PANTOMIME
With kind permission from Ben Crocker Scripts

Treasure Island



Directed by: Simon Lee
Assistant Director: Scarlett Blair

£8 per adult

£4 per child

22nd - 25th January 2020

7:30pm evenings, 2:00pm Saturday Matinee

WWW.BLEADON-PLAYERS.CO.UK

BLEADON GARDEN SERVICES

Landscape Gardening

Fully Qualified Gardener and Landscape Designer

- ✦ All forms of Garden Maintenance - no garden too small
- ✦ Correct shrub pruning techniques

✦ Landscape/Garden design

✦ Garden Overhauling / clearance

30 Years experience including Redesign and re-landscaping of numerous Public Parks

**CONTACT: Joe Scully, Hillcote,
Bleadon Hill,
07903 323885**

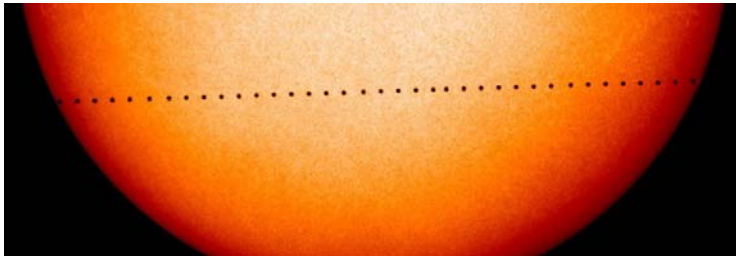


Skies from Bleadon: November 2019

The Transit of Mercury

This month will see the transit of Planet Mercury across the face of the Sun in the afternoon of Monday 11th November. In 2016, the whole of the transit was visible, however this time, the Sun will have actually set by the time Mercury leaves the Sun's surface. First contact will be at 12:35 and midway will be at 15:19.

Remember though never to look directly at the Sun either with the naked eye or a telescope as this is exceptionally dangerous. One of the best and safest ways is to watch a live stream of the event and this can be done by logging onto the Royal Observatory Greenwich, where astronomers will be using state of the art telescopic equipment and also be on hand to explain just what is happening. This is of course if the weather is favourable! Let's hope so, because the next opportunity to see this amazing event will be in 2032!



So What Else is in Store in November?

In November we have the opportunity to see not one but 2 meteor showers.

The first that it is thought might produce some bright events is the "Northern Taurids Shower" which has a broad peak of around 10 days but normally gives relatively few meteors per hour. The peak is around the 10th of November when the Moon is coming up to Full so its light may intrude.

The meteors arise from comet 2P/Encke. Its tail is especially rich in large particles and, this year, we may pass through a relatively rich band so it is possible that some fireballs might be observed.

The better-known November shower is the Leonids which peak on the night of the 17th/18th of the month. The Moon is coming up to Third Quarter so its light may again hinder our view - but the Leonids do contain some larger particles so some brighter meteors may well be seen. As one might expect, the shower's radiant lies within the sickle of Leo and meteors could be spotted from the 15th to the 20th of the month.

The Leonids are famous because every 33 years a meteor storm might be observed when the parent comet, 55P/ Temple-Tuttle passes close to the Sun. In 1999, 3,000 meteors were observed per hour but we are now halfway

between these impressive events hence with a far lower expected rate.



And finally, low in the West from Sun set on 1st November, we should be able to see Jupiter with the naked eye to the right of the waxing crescent Moon and to the left Saturn. They appear as very bright relatively fixed points of light, although there may be some shimmer due to being low on the horizon.

If you are an early bird, one item of note just before dawn on 9th November will see the appearance of Mars just to the left and above the very bright star Spica. Mars will appear orangey red to the naked eye.



Happy and Clear Observing Everyone!!

Jo Richardson FRAS

Space Detectives

ESERO-UK Space Ambassador

M E R R Y
Christmas

AND A HAPPY NEW YEAR FROM ALL
THE ESCAPE TEAM



We care about you

ESCAPE

HAIR AND BEAUTY

To book an appointment ready for Christmas call 01934 813400
Thank you for supporting small local business

Mark Howe

Gardening Services

9 Malvern Road, Weston-super-Mare

Phone 01934 413594 or 07773272003

REGULAR GRASS CUTTING
HEDGES AND TREES CUT
SHURBS PRUNED
GENCE PAINTING
TURFING
PATIOS AND CHIPPINGS LAID
LAWN TREATMENTS
DECKING ERRECTED
PATIOS AND PATHS PRESSURE WASHED
FENCING ERRECTED AND REPAIRED
SHED ERECTION AND REPAIR
BLOCK PAVING REPAIRS



DB SECURITY SYSTEMS
INTRUDER ACCESS CCTV

LOCAL RELIABLE SERVICE



FREE advice and quotations



• Domestic and Commercial Security Alarm and CCTV Systems (Wired and Wireless)
• Access Control Systems
• Intercom Systems
• Security Lighting

20 YEARS EXPERIENCE

T 01934 260 017
M 07976 516 058
E darren.bishop.uk@googlemail.com



Proud to be independent, vet owned and operated.

Still offering our clients our own 24hour Out of Hours Service.



WWW.AXEVALLEYVETS.CO.UK



Please call us on 01934 814156 for more details!



Unit V, Purn House Farm, Purn Way, Bleadon,
Weston Super Mare, BS24 0QE



Find us on
Facebook

As the clocks go back and the nights draw in its time to think again about outside security.

Have the garden tools and kids toys been locked away in the shed or garage. Is the shed or garage lock in good order.

Does the outdoor sensor light still work and does the cctv cover where you want it to.

All simple checks to help make your home secure.

If you need crime prevention advice and would like one of our PCSO's to visit you please call 101 and your local officer will get back to you.

Mike Benfield

Something Sweet?

Bleadon Sugarcraft Club has been successful for well over 10 years in Bleadon, for like minded people who love decorating cakes and are looking to share ideas.

The Club is open to all ages and abilities, and we have demonstrations or practical evenings every month. We cover all aspects of cake decorating from modelling, painting on cakes, royal icing and sugar flowers, and the programme is very varied, with some famous names in sugarcraft. For example coming up we have:

- | | |
|------------|---|
| 28th Nov | How to make succulent cupcakes (Sue Duggan) |
| 27th Jan | How to make flowers out of wafer/rice paper (Rhianyyd Webb) |
| 27th Feb | Ideas for spring time cakes (Ann Pickard) |
| 26th March | Practical fun evening |

We meet on the 4th Thursday of the month (excluding August and December), membership is £25 pa including public liability insurance (conditions apply). Come and try the club as a visitor for just £3.50, all you need to do is turn up and we will be delighted to see you.

To contact us see our Facebook page "Bleadon Sugarcrafters"

Email: "bleadonsugarcraftclub@gmail.com"

Tel: Sue 07535 915582



Bleadon Horticultural Society

On Saturday 7th of September Bleadon Horticultural Society hosted its 45th annual Summer Show at the Coronation Hall. Over 200 entries were received and the hall came alive with the summer colour of cut flowers, vegetables and fruit (silverware won by Amanda Du-Rose and Tony Pet-titt). More summer colour was demonstrated in the floral exhibits where Donna Ralph and Vivian Whitfield received the top prizes with further prizes awarded to exhibits depicting our favourite books which showed great imagination. Many visitors came to enjoy the show and as well as viewing a wide selection of homecraft (where the homecraft cup was awarded to Alison Thorne), visitors got to indulge in beautiful homemade cakes.

The juniors also got to take silverware home with Nicole Stayanova taking home the cup for most points overall for those aged 5 yrs and under and Rosie for those aged 6-11 yrs.

Thank you to everyone who supported our village show and we look forward to the Spring show which is to be held on Saturday March 7th 2020.

Our next meeting is on Tuesday 19 November, when Head Gardener Paul Evans will give a talk on the history and development of the garden at NT Tyntesfield. We meet in the Coronation Hall at 7.30pm. All are welcome. The entrance fee is £2.

On Tuesday 17 December we are holding a Beetle Drive and Social with an American style supper. Tickets costing £2 must be bought in advance (phone 07801 386477).

Rose Benjamin and Libby Boucher



BLEADON WI

To celebrate 10 years of Bleadon WI, we are making our annual Christmas celebrations bigger and better: all welcome at our Christmas Carol service on Friday, 13 December at 6 pm in St Peter & St Paul's Church, featuring our WI choir, the Bleadon Belles; afterwards, at 7 pm, everyone welcome at our Christmas event in the Coronation Hall, with outdoor carol singing in the car park, a visit from Father Christmas, pork rolls and hot dogs, bar, tombola and much, much more!

A fabulous wine tasting evening planned for 29 November is 'sold out' – sorry that some people may have been disappointed. To mark our first ten years, we would also love to donate a



'Chat Bench' to the village – somewhere to sit and pass the time of day with someone – watch this space.

Plans for our third 'Ball' next year on 26 September 2020 are well in hand. It will be a new venue for us – the beautifully refurbished ballroom in the Winter Gardens. Tickets will be on sale shortly.

WI 'life' continues apace: our Lunch Club has visited The

Grange, Brent Knoll and The Queen's Arms; members from the Walking Netball group have attended a WI tournament in Paignton and will take part in a local tournament at Hutton Moor in December; our Walking Group has explored the Cleeve and Sand Bay areas; two skittles teams – Bleadon Birds and Bleadon Bees – will again be taking part in the Avon Federation skittles tournament.

It hasn't taken long for our WI choir, Bleadon Belles, and their lovely new music director, Naomi Hickman, to bond and form a strong working relationship. Naomi is bringing a fresh approach and new ideas to the widening choir repertoire and, currently they are practising hard for the carol service.

'Happy Christmas'!

Libby Lockyer



Jo Jones (Bleadon Belles)

Bleadon Volunteer Wins Award

Bleadon villager Helen Whitaker has been voted Volunteer of the Year out of 140 hospital volunteers, by the Weston Area Health Trust for her voluntary work at Weston Hospital's Macmillan Centre.

The following is an abridged extract from the nomination which describes her role: Helen volunteers in the Macmillan support centre once a week and is responsible for compiling information packs for newly diagnosed cancer patients and general information within the centre. She is the first point of contact for patients and relatives and has to be friendly and approachable. Her calming smiling nature ensures that all patients feel welcomed and are put at ease often when they are upset and distressed. She is aware of their need for privacy and dignity. She is passionate about the service Macmillan offer and uses her skills to ensure that patients get the best possible care.

Helen received the award at a ceremony at the Winter Gardens Pavilion Weston.

There are a lot of volunteers in Bleadon. If you know someone with an interesting voluntary role, no matter how small, please Contact the Editor.



Christmas Trees For Sale

Unit 7, Purn House Farm
Behind Bleadon Post Office
Open Every Day
9.30am ~ 5.30pm
From 1st December

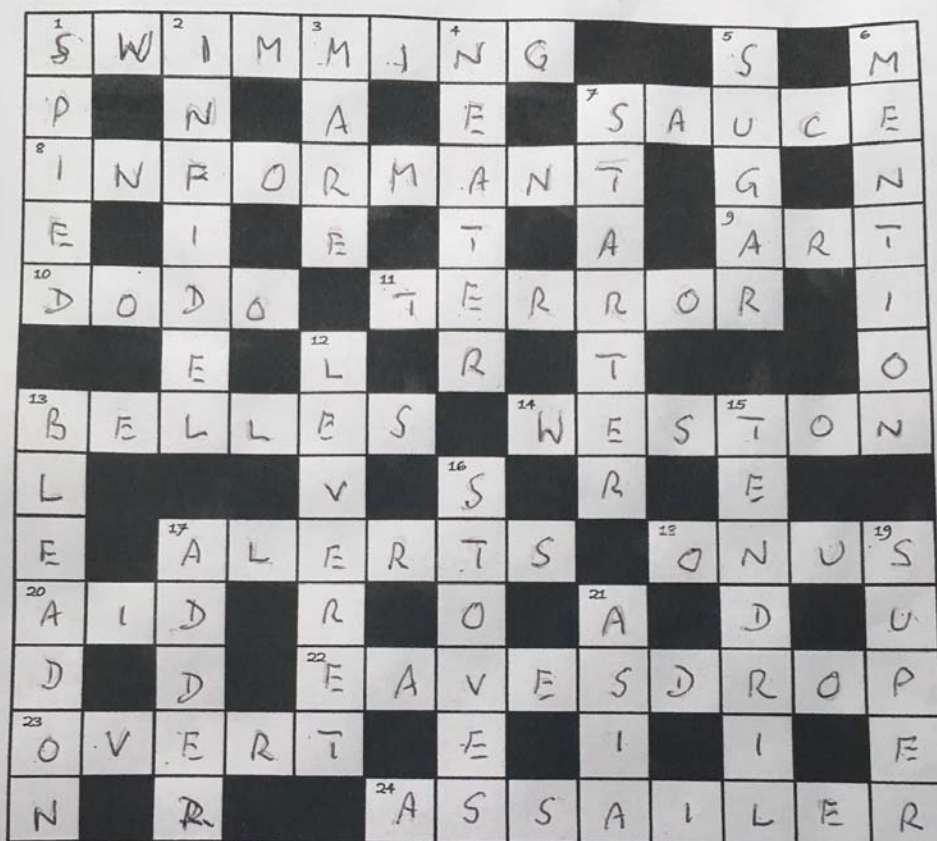
Live Christmas Trees, traditional and non drop
Cut and potted
3ft to 10ft

Christmas Tree Stands

A selection of christmas decorations, lights and more



A Bleadon Cross Word.



Note from the Editor

The views expressed in Bleadon News are not necessarily those of the Parish Council or the Editor

Our thanks to the leaflet distributors as the Bleadon News is delivered to every house by a team of volunteers.

Bleadon News is your paper—please contribute you news and views and articles and contact us about Advertising. The anticipated copy deadline dates are 8th January , 8th March, 8th August and 8th November.

Contact the Parish Council— Parishclerk@bleadonparishcouncil.gov.uk for advertising rates and information.

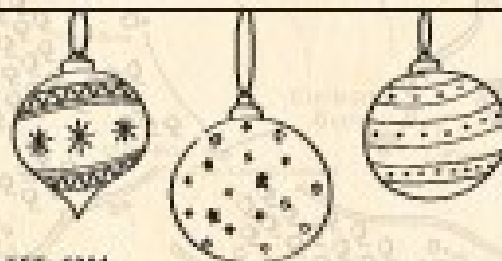
The Editor reserves the right to reject articles or adverts for any reason.

Kirsten Hemingway



WELCOME TO OUR CIDER SHOP.

Pop into our cider shop this Christmas for gift ideas and a range of our delicious ciders to make sure you are stocked up ready for the festive period.



EST. 1894
THATCHERS

Thatchers Cider Company, Myrde Farm, Sandford, Somerset, BS25 5RA
Visit [www.thatcherscider.co.uk/visit us](http://www.thatcherscider.co.uk/visit-us) | Tel: 01934 822862



DAVID PLAISTER

PROPERTY AGENTS | SALES & LETTINGS | AUCTIONEERS

01934 815053

www.davidplaister.co.uk